

WAVE WOOD

PREMIUM Line

Cherry: Ref. - V00073
EAN13 - 5600217588329

Black: Ref. - V00074
EAN13 - 5600301840517

White: Ref. - V00075
EAN13 - 5600301840524

Light Brown: Ref. - V00076
EAN13 - 5600217588978

Nordik: Ref. - V00077
EAN13 - 5600217588985

Box - 63 x 63 x 62 cm

Weight - 13.5 Kg

Each panel - 59.7 x 59.7 x 6.2 cm

Units per box - 10



Black



White



Nordik



Light Brown



Cherry



Church - Lebanon

FEATURES Wave Wood

The Wave Wood panel represents one of the strongest Vicoustic solutions in terms of the Absorption and Reflection Control System*.

This is an ideal solution to those who search balanced sound ambiances that simultaneously control the exceeding energy in a room, and still maintain a living and bright sound.

***ARCS - Absorption and Reflection Control System.** The ARCS system is the Vicoustic's research model, in the area of absorption and diffusion combination solutions. Therefore, it includes the study, combination and appliance of the best foam and wood properties allied with the design of non linear sequential cavities. The system presumes the optimal balance between the absorption area and the reflecting surface.

APPLICATIONS Wave Wood

Listening Rooms, Home Theaters, Recording and Broadcast Studios, Post Production Studios, Performance Spaces, Rehearsal Rooms, Conference and Teleconference Rooms, Public Spaces, Auditoriums, etc.

TECHNICAL INFORMATION Wave Wood

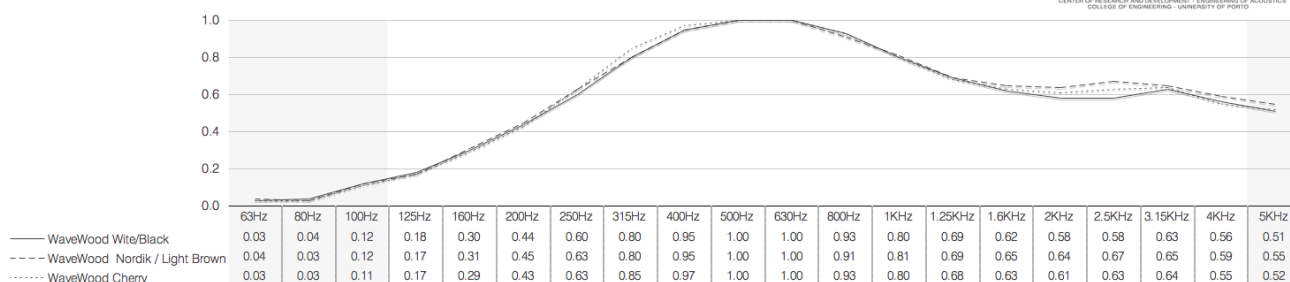
Material: Acoustic Foam and Wood

Fire Rating: Acoustic Foam - M1

Installation: Adhesive Flexi Glue

PERFORMANCE Wave Wood

Absorption coefficient - accordance with the Standards EN - ISO 354



NI&DEA FEUP
CENTER OF RESEARCH AND DEVELOPMENT - ENGINEERING OF ACOUSTICS
COLLEGE OF ENGINEERING - UNIVERSITY OF PORTO